

МІНІСТЕРСТВО ОСВІТИ І НАУКИ УКРАЇНИ  
НАЦІОНАЛЬНИЙ ТЕХНІЧНИЙ УНІВЕРСИТЕТ  
«ХАРКІВСЬКИЙ ПОЛІТЕХНІЧНИЙ ІНСТИТУТ»

## **ПОШУК ТА ОБРОБКА ІНФОРМАЦІЇ**

**Методичні вказівки з англійської мови для студентів 1 курсу  
спеціальності 263 Охорона праці**

## **INFORMATION SEARCHING AND PROCESSING**

**English learner guide for 1st year students  
specialty 263 Occupational Safety**

Затверджено  
редакційно-видавничою  
радою університету,  
протокол № 3 від 24.10.2024р.

Харків  
НТУ «ХПІ»  
2024

Методичні вказівки з англійської мови для студентів 1 курсу спеціальності 263 «Охорона праці»; English learner guide for 1st year students 263 «Occupational safety» / уклад. О.Є. Коржавіна, О.Я. Лазарева, О.О. Чернишенко. Харків: НТУ «ХП», 2024. - с.31

Укладачі: викл. Коржавіна О.Є., доц. Лазарева О.Я., ст. викл. Чернишенко О.О.

Рецензент: доцент кафедри іноземних мов НТУ «ХП»  
кандидат педагогічних наук Лариса ШЕЇНА

Кафедра іноземних мов

## CONTENTS

1. Unit 1	
1.1. What is Occupational Safety? .....	4
1.2. Objectives of Occupational Safety .....	7
2. Unit 2	
2.1. Workplace and Health .....	12
2.2. Occupational Hazards .....	16
3. Unit 3	
3.1. Workers' participation .....	19
3.2. First aid.....	22
4. Unit 4	
4.1. Special occupational health needs.....	25
4.2. Preventive and protective measures.....	27

# Unit 1

## 1.1. What is Occupational Safety?

### Word list

**to preserve** – берегти, для збереження

**maintenance** – обслуговування, підтримк

**adverse** – несприятливий, шкідливий

**hazard** – небезпека, ризик

**cotton spinning** – прядіння бавовни

**emergence** – поява, виникнення

**approach** – підхід

**legislation** – закон



**Task 1. Read the text and complete the sentences using the verb in brackets in the right form of the passive.**

Occupational health and safety (1) \_\_\_ the discipline \_\_\_ (concern) with preserving and protecting human resources in the workplace. *It has the following components:*

- Promotion and maintenance of the highest degree of physical, mental and social well being of workers in all occupations;
- Prevention among workers of departures from health caused by their working conditions;
- Protection of workers in their employment from risks resulting from factors adverse to health;
- Placing and maintenance of a worker in an occupational environment adapted to his physiological and psychological equipment.

## Historical and Legal Context

The origins of occupational health and safety concerns can (2) \_\_\_ (trace back) to the Industrial Revolution in the USA (late 18th to 19th century), which (3) \_\_\_ (mark) by innovations like cotton spinning and textiles, steam engines, iron founding etc. This resulted in the emergence of cotton mills, semi-automated factories and iron industries, which established the base for the Industrial Revolution. Although the Industrial Revolution contributed to economic development, it had a negative impact on the health and safety of the workers working in these factories and industries. Men and women workers (4) \_\_\_ (expose) to harmful gases, toxins, acids, extreme heat and cold temperatures, light and sound that had a harmful impact on their physical, social, and psychological health. The injuries, diseases and health hazards faced by workers as a result of the Industrial Revolution drew the interest of scholars and leading thinkers of that period, who felt that issues of industrial health and hygiene must (5) \_\_\_ (address).

Annie Hamilton, an American toxicologist, physician and educator studied the impact of industrial metals and chemical compounds on human beings. She became a pioneer in industrial diseases and hygiene. Occupational health and safety is a cross disciplinary area and it interacts with other disciplines such as occupational medicine, occupational or industrial hygiene, public health, safety engineering, ergonomics, toxicology, epidemiology, health physics, environmental health, industrial relations, public policy, industrial sociology, medical sociology, social law, labour law and occupation health psychology.

Occupational health has therefore gradually developed from a mono-disciplinary risk oriented activity to a multidisciplinary and comprehensive approach that considers an individual's physical, mental and social well-being, and general health and personal development.

Across the world, acts, legislations, and policies (6) \_\_\_ (create) with the objective of ensuring good health and safe work environments for all workers. Every country has its own act and policy on occupational health and safety.

**Task 2. Read the statements below and then decide if they are True (T) or False (F)**

Statement	Answer
1. Occupational health and safety is the discipline concerned with preserving and protecting human resources in everyday life.	
2. The origins of occupational health and safety concerns can be traced back to the Industrial Revolution in the United Kingdom.	
3. The Industrial Revolution had a negative impact on the health and safety of the workers.	
4. Annie Hamilton studied the impact of industrial metals and chemical compounds on human beings.	
5. Occupational health and safety doesn't interact with other disciplines.	

**Task 3. Join the first half of the sentence in Column A to the correct ending in Column B**

Column A	Column B
1. This resulted in the emergence of	<b>A</b> a cross disciplinary area.
2. Men and women workers were	<b>B</b> industrial diseases and hygiene.
3. She became a pioneer in	<b>C</b> cotton mills, semi-automated factories and iron industries.

4. Occupational health and safety is	<b>D</b> act and policy on occupational health and safety.
5. Every country has its own	<b>E</b> xposed to harmful gases, toxins, acids, extreme heat and cold temperatures, light and sound.

**Task 4. Now complete the notes below with a suitable word or phrase from the texts. You can use up to 3 words.**

1. \_\_\_\_\_ (1) of physical, mental and social well being of workers in all occupations;
2. Protection of workers in their employment \_\_\_\_\_ (2) adverse to health;
3. The injuries, diseases and health hazards \_\_\_\_\_ (3) drew the interest of scholars and leading thinkers of that period.
4. \_\_\_\_\_ (4) from a mono-disciplinary risk oriented activity to a multidisciplinary and comprehensive approach...
5. Across the world, acts, legislations, and policies \_\_\_\_\_ (5) good health and safe work environments for all workers.

## 1. 2 Objectives of Occupational Safety

### Word List

**to emphasise** – підкреслити

**strengthening** – зміцнення

**assessment** – оцінка

**establishment** – створення

**human dignity** – людська гідність

**achievement** – досягнення



**self-fulfillment** – самореалізація

**to implement** – реалізувати

**vital** – життєвий

**dissemination** – поширення

**to enhance** – для підвищення, покращити

**compliance** – відповідність

**Task 1. Read the text and find the following information:**

- **key documents of WHO**
- **principles of Occupational Safety**

The prime objective of Occupational health and safety at a global level is to ensure that health and safety is accessible to every worker employed in any sector across the economy. The World Health Organisation (WHO) has included elements of occupational health in its policy. The need to protect the worker from occupational health hazards and promote safety of all at the workplace has been emphasised in key documents of WHO - the Constitution of the WHO,

Declarations of Alma Ata Declaration, Global Strategy on Occupational Health for All, WHO General Programmes of Work. According to the document, Global Strategy on Occupational Health for All, *the ten high priority objectives proposed by the strategy are as follows:*

- Strengthening of international and national policies for health at work and developing the necessary policy tools
- Development of healthy work environment
- Development of healthy work practices and promotion of health at work

- Strengthening of Occupational health and safety
- Establishing of support services for occupational health
- Development of occupational health standards based on scientific risk assessment
- Development of human resources for occupational health
- Establishment of registration and data systems, development of information services for experts, effective transmission of data
- Strengthening of research
- Development of collaboration in occupational health and with other activities and services.

### **Principles of Occupational Safety**

- *All workers have rights.* Workers, as well as employees and government, must ensure that these rights are protected.
  - Work should take place in a safe healthy environment;
  - Conditions of work should be consistent with workers' well-being and human dignity;
  - Work should offer real possibilities for personal achievement, self-fulfillment.
- *Occupational health and safety policies must be established.* Such policies must be implemented at both the governmental and enterprise levels.
- *There is a need for consultation with the social partners.* This should be done during the formulation, implementation and review of such policies.
- *Prevention and protection must be the aim of occupational health and safety programmes and policies.* Efforts must be focused on primary prevention at the workplace level. Workplaces and working environment should be planned and designed to be safe and healthy.

- *Information is vital for the development and implementation of effective programmes and policies.* The collection and dissemination of accurate information on hazards, monitoring of compliance with policies and good practices, and other related activities are central to the establishment of effective policies.

- *Health promotion is a central element of occupational health practice.* Efforts must be made to enhance workers' physical, mental and social well-being.

- *Occupational health services covering all workers should be established.* Ideally all workers in all categories of economic activity should have access to such services, which aim to protect and promote workers' health and improve working conditions.

- *Compensation, rehabilitation and curative services must be made available to workers who suffer occupational injuries, accidents and work related diseases.* Action must be taken to minimise the consequences of occupational hazards.

- *Education and training are vital components of safe, healthy working environments.* Workers and employers must be made aware of the importance and the means of establishing safe working procedures.

- *Workers, employers and competent authorities have certain responsibilities, duties and obligations.* For example, workers must follow established safety procedures; employers must provide safe workplaces and ensure access to first aid; and the competent authorities must devise, communicate and periodically review and update occupational health and safety policies.

- *Policies must be enforced.* A system of inspection must be in place to secure compliance with occupational health and safety and other labour legislation.

## **Task 2. Complete the sentences.**

a) The World Health Organisation has included elements of occupational health \_\_\_\_\_.

b) Workers, as well as employees and government, must ensure that \_\_\_\_\_.

- c) Workplaces and working environment should be \_\_\_\_\_.
- d) Health promotion is a \_\_\_\_\_.
- e) The competent authorities must devise, communicate and \_\_\_\_\_.

**Task 3. Read the statements below and then decide if they are True (T) or False (F)**

Statement	Answer
1) The prime objective of Occupational health and safety at a global level is to ensure that health and safety is accessible to every worker employed in definite sectors across the economy.	
2) According to the document, the Constitution of the WHO, the ten high priority objectives proposed by the strategy are as follows:	
3) Conditions of work should be consistent with workers' well-being and human dignity.	
4) There is no need for consultation with the social partners.	
5) Workers, employers and competent authorities have certain responsibilities, duties and obligations.	

**Task 4. Find in the text English equivalents of the following:**

1. Перша допомога	A. policy
2. Обов'язок	B. review
3. Травма	C. authority
4. Огляд	D. first aid
5. небезпека, загроза	E. environment
6. Працівник	F. obligation
7. Запобігання	G. injury
8. Політика	H. rehabilitation
9. Влада, адміністрація	I. hazard

10. Розвиток	J. prevention
11. Відновлення	K. employee
12. Навколишнє середовище	L. development

## Unit 2

### 2. 1 Workplace and Health

#### Word list

**crucial** – важливий

**selfesteem** – самооцінка

**harassment** – переслідування

**emphasis** – наголос

**vulnerable** – вразливий

**weaving factories** – ткацькі фабрики

**sustainability** – стійкість



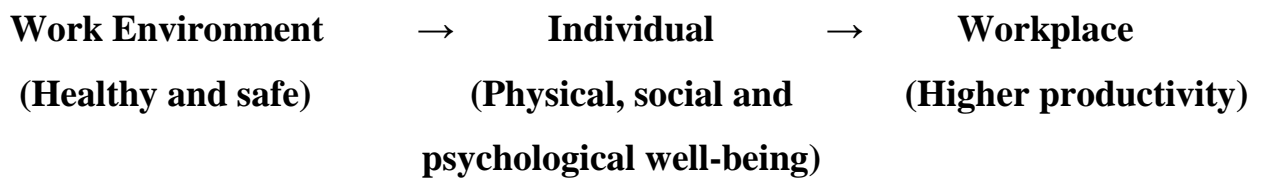
#### **Task 1. Read the text and find the definition of a healthy workplace.**

Work receives considerable attention due to its social and economic importance. The primary function of work in any society is to produce and distribute goods and services. Not enough attention is paid to the importance that work has for the individual. However, studies have shown that work plays a crucial and unparalleled psychological role in developing selfesteem and a sense of work. Work for which there is no economic reward is also satisfying and personally gratifying. This refers to work such as childcare, care for the sick and aged, household-work, voluntary work etc.

An individual's work environment is very crucial. The work environment can have a positive or negative impact on the individual. If the environment within the workplace is healthy and secure, which means that if the workplace has sufficient

structures and systems that addresses the well-being of the worker, then the worker will be able to perform better and his or her productivity levels will be very high.

In other words, the environment of the workplace has an impact on the individual's socio-psychological health, which has an impact on the overall output.



When we say safe and secure work environment, we are not only referring to the availability of safe and hazard free equipment or tools within the workplace, but also aspects such as human relations within the workplace, which have a direct impact on the physical and psychological health of the individual. For example, how do the men behave with the women at the workplace? How is the behaviour of an employer towards his or her employee? Does any employee face various forms of harassment such as sexual harassment, bullying from a fellow staff member or a senior, which makes him or her insecure and reduces their productivity, further resulting in illness and health problems? Does the workplace have policies such as a health and safety policy, prevention of sexual harassment policy and other policies, which ensure that everyone working in the workplace is secure and is free from stress? These are questions that every workplace should be finding solutions to.

Particular emphasis should be given to women and children, and there should be enough mechanisms in all workplaces to ensure that their health and safety requirements are addressed, as they are the most vulnerable. In factories, construction work, mines, railway stations, power-plants, jewellery making, weaving factories etc., workers work in the midst of dust; extreme heat and cold temperatures; strong/bad light and loud sounds, where they face numerous physical, biological, chemical health hazards. Women and children working in factories with bad lighting or for longer working hours are prone to

danger. Thus every workplace must strive towards ensuring the well-being of all its employees irrespective of their sex, class, caste and ethnic identities.

Workplaces must introduce preventive measures in the workplace to reduce the number of accidents or health hazards at the workplace. The definition of a healthy workplace extended by World Health Organisation is “A healthy workplace is one in which workers and managers collaborate to use a continual improvement process and promote the health, safety and well-being of all workers and the sustainability of the workplace by considering the following based on *identified needs*:

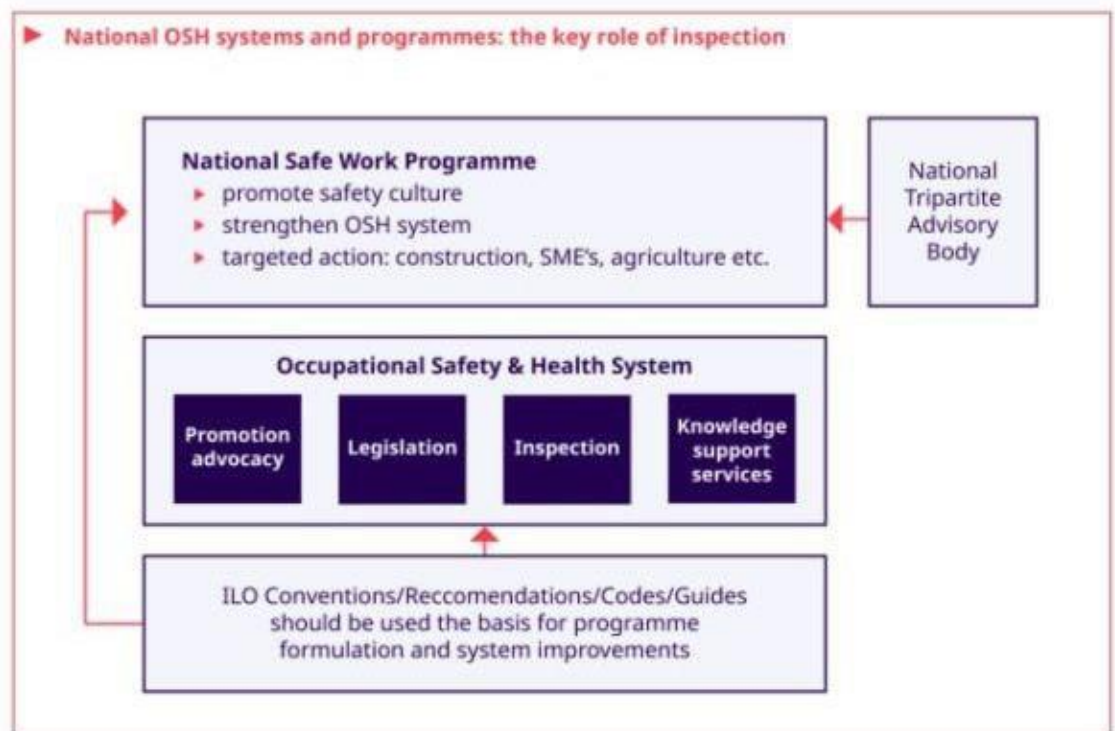
- Healthy and safety concerns in the physical work environment;
- Health, safety and well-being concerns in psychosocial work environment including personal health resources in the workplace;
- Ways of participating in the community to improve the health of all the workers, their families and other members of the community”.

**Task 2. Join the first half of the sentence in Column A to the correct ending in Column B**

Column A	Column B
1. The primary function of work in any society is	<b>A</b> developing self-esteem and a sense of work.
2. Work plays a crucial and unparalleled psychological role in	<b>B</b> the number of accidents or health hazards at the workplace.
3. The environment of the workplace has an impact on	<b>C</b> a continual improvement process and promote the health, safety and well-being of all workers.
4. Workplaces must introduce preventive measures in the workplace to reduce	<b>D</b> to produce and distribute goods and services.
5. A healthy workplace is one in	<b>E</b> the individual’s socio-psychological

which workers and managers collaborate to use	health, which has an impact on the overall output.
---	--

**Task 3. Look at the diagram below and explain the role of inspection within the OSH system.**



**Task 4. Choose the correct alternative.**

1. Promotion and maintenance of **the higher / the highest / highest** degree of physical, mental and social well being of workers in all occupations.
2. If the workplace has sufficient structures and systems that addresses the well-being of the worker, then the worker will be able to perform **better / the best / the better** and his or her productivity levels will be very high.
3. There should be enough mechanisms in all workplaces to ensure that their health and safety requirements are addressed, as they are **the more / most / the most** vulnerable.

## 2. 2 Occupational Hazards

### Word list

**exposure** – вплив, виявлення

**occurrence** – виникнення

**solvents** – розчинники

**HIV** – ВІЛ/СНІД

**anticipated** – очікуваний

**layout** – схема

**elaboration** – розробка

**maintenance** – збереження



### **Task 1. Read the text and name two categories of occupational hazards.**

An occupational hazard can be defined as any condition that may affect the wellbeing or health of the persons.

Occupational hazards can be divided into two categories: *safety hazards* that cause accidents that physically injure workers, and *health hazards* that result in the developing of a disease. It is important to note that a “hazard” only represents the potential to cause harm. Whether it actually does harm will depend on circumstances, such as the number of workers exposed and the degree and duration of exposure. The occurrence or severity of occupational disease is related to the exposure to factors on the job or in the work environment. *Such factors can be:*

- Physical – heat, noise, radiation, vibration, cold
- Chemical – solvents, pesticides, heavy metals, dust
- Biological – tuberculosis, hepatitis B virus, HIV
- Psychosocial stressors – lack of control over work, inadequate personal support

- Mechanical – causes of work accidents and injuries

The ideal approach to hazard prevention is “anticipated and integrated preventive action”, *which should include:*

- Occupational health and environmental impact assessments, prior to the design and installation of any new workplace.
- Selection of the safest, least hazardous, and least polluting technology (‘cleaner production’).
- Environmentally appropriate location.
- Proper design, with adequate layout and appropriate control technology, including the safe handling and disposal of the resulting effluents and waste.
- Elaboration of guidelines and regulations for training on the correct operation of the processes, including on the safe work practices, maintenance and emergency procedures.

**Task 2. Fill in the blanks.**

1. It is important to note that \_\_\_\_\_ to cause harm.
2. \_\_\_\_\_ is “anticipated and integrated preventive action”.
3. The occurrence or \_\_\_\_\_ the exposure to factors on the job or in the work environment.
4. Proper design, with adequate layout and appropriate control technology, \_\_\_\_\_ and waste.

**Task 3. Choose the correct letter a, b or c.**

1. *Occupational hazards can be divided into two categories:*
  - a) work and health hazards
  - b) safety and health hazards
  - c) health and pollution hazards

2. *Physical factors are*

- a) dust
- b) tuberculosis
- c) cold

3. *Chemical factors are*

- a) solvents
- b) noise
- c) HIV

4. *The ideal approach to hazard prevention should include:*

- a) psychosocial stressors
- b) environmentally appropriate location
- c) elaboration of rules

**Task 4. Write comparative and superlative adjectives**

- 1. vulnerable
- 2. crucial
- 3. vital
- 4. safe
- 5. healthy
- 6. secure
- 7. sufficient
- 8. harmful

## Unit 3

### 3. 1 Workers' participation

#### Word list

**undertaking** – підприємство

**to contribute** – вносити

**efficacy** – ефективність

**to sustain** – утримувати

**surveillance** – нагляд, контроль

**precaution** – обережність



**Task 1. Read the text and name responsibilities of staff involved in the surveillance of the working environment.**

Cooperation between management and workers or their representatives within an enterprise is an essential element of prevention of accidents and diseases at the workplace. Participation is a fundamental workers' right, and it is also a duty. Employers have various obligations with regard to providing a safe and healthy workplace, and workers should, in the course of performing their work, cooperate in order to enable their employer to fulfill those obligations. Their representatives in the undertaking must also cooperate with the employer in the field of occupational safety and health. Employee participation has been identified as a key precondition of successful occupational health and safety management and a major contributing factor in the reduction of occupational diseases and injuries. The full participation of workers in any occupational health and safety programmes designed for their benefit will not only ensure the efficacy of such measures, but will also make it possible to sustain an acceptable level of safety and health at a reasonable cost.

## **Training**

The continuous integration of improvements into the work process is vital, but it is possible only if everyone involved is properly trained. Training is an essential element in maintaining a healthy and safe workplace and has been an integral component of OSH management for many years. Managers, supervisory staff and workers all need to be trained. Workers and their representatives in the undertaking should be given appropriate training in occupational safety and health. Training in occupational safety and health should not be treated in isolation; it should feature as an integral part of job training. Management must ensure that all those who play a part in the production process are trained in the technical skills that they need to do their work.

### **Responsibilities of staff involved in the surveillance of the working environment**

*Staff involved in the surveillance of the working environment are responsible for:*

- conducting surveys of the working environment;
- interpreting the data gathered during the survey;
- keeping records;
- preparing appropriate control measures;
- preparing adequate warnings;
- suggesting precautions where dangers exist;
- advising management on industrial hygiene;
- educating workers and the community at large on basic occupational safety and health;
- conducting epidemiological studies to uncover the presence of occupation-related illness and injury.

### **Task 2. Find the following information in the text:**

1. What is an essential element of prevention of accidents and diseases at the workplace?
2. What is a key precondition of successful occupational health and safety management?

**Task 3. Complete the notes below with a suitable word or phrase from the texts. You can use up to 3 words.**

1. Participation is a fundamental \_\_\_\_\_, and it is also a duty.
2. Their representatives in the undertaking must also cooperate with the employer \_\_\_\_\_ of occupational safety and health.
3. Training is an essential element in maintaining a \_\_\_\_\_ workplace and has been an integral component of OSH management for many years.
4. \_\_\_\_\_ in occupational safety and health should not be treated in isolation.

**Task 4. Join the first half of the sentence in Column A to the correct ending in Column B**

Column A	Column B
1. Employee participation has been identified as	A. is an essential element of prevention of accidents and diseases at the workplace.
2. Managers, supervisory staff and workers	B. are trained in the technical skills that they need to do their work.
3. Management must ensure that all those who play a part in the production process	C. a key precondition of successful occupational health and safety management.
4. Cooperation between management and workers or their representatives within an enterprise	D. but it is possible only if everyone involved is properly trained.
5. The continuous integration of improvements into the work process is vital,	E. all need to be trained.

## 3.2 First aid

### Word list

**intervention** – втручання

**indisposition** – нездужання

**to imply** – означати

**curative** – лікувальний



**Task 1. Read the text and name the tasks of occupational health services in enterprises.**

In the context of occupational safety and health, first aid means the immediate measures taken at the site of an accident by a person who may not be a physician but who is trained in first aid, has access to the necessary equipment and supplies, and knows what must be done to ensure that professional medical care will follow his or her intervention.

When a serious accident happens, the first few minutes may be decisive in terms of lives being saved or injuries avoided. Therefore, taking national law and practice into account, *occupational health services in enterprises should:*

- provide first aid and emergency treatment in cases of accident or indisposition of workers at the workplace;
- collaborate in the organization of first aid.

It is the employer's responsibility to ensure that first aid is available at all times. This implies a responsibility to ensure that trained personnel are available at all times. It is up to the occupational health service to ensure the training and regular retraining of first-aid personnel.

## Curative health services and rehabilitation

Although occupational health services essentially focus on prevention, they may also engage in other health activities, where the local organization of health care or the distance of the workplace from general medical clinics makes such extended activities appropriate. These may include curative medical care for workers and their families, provided that the activities are authorized by the competent authority in consultation with the most representative organizations of employers and workers.

Measures should be taken to encourage and promote programmes or systems aimed at the rehabilitation of workers unable to undertake their normal duties because of occupational injury or illness. The provision of such care, where appropriate, should not involve any cost to the worker.

### Task 2. Fill in the blanks.

1. When a serious accident happens, the first few minutes \_\_\_\_\_ in terms of lives being saved or injuries avoided.
2. Occupational health services \_\_\_\_\_ in the organization of first aid.
3. It is \_\_\_\_\_ to ensure the training and regular retraining of first-aid personnel.
4. The provision of such care, where appropriate, \_\_\_\_\_ to the worker.

### Task 3. Join the first half of the sentence in Column A to the correct ending in Column B

1. It is up to the occupational health service	A. unable to undertake their normal duties because of occupational injury or illness.
2. First aid means the immediate measures taken at the site of an accident by a person who	B. to ensure the training and regular retraining of first-aid personnel.
3. Measures should be taken to	C. the first few minutes may be

encourage and promote programmes or systems aimed at the rehabilitation of workers	decisive in terms of lives being saved or injuries avoided.
4. When a serious accident happens,	D. may not be a physician but who is trained in first aid, has access to the necessary equipment and supplies, and knows what must be done.

**Task 4. Write the adjective in parenthesis with the correct ending ("-ed" or "ing").**

1. I'm \_\_\_\_\_ (disgust) with your behaviour. You don't seem to care at all about hurting other people.
2. I think it's very \_\_\_\_\_ (alarm) that the world's rainforests are disappearing so fast and no-one is doing anything to stop it.
3. I was \_\_\_\_\_ (depress) to hear that another 20,000 square kilometers of rainforest were destroyed last year.
4. Working in the garden all day is very \_\_\_\_\_ (tire).
5. I never watch news shows these days. I find it all too \_\_\_\_\_ (depress).
6. I felt \_\_\_\_\_ (humiliate) when he ignored me in front of all my friends.

## Unit 4

### 4.1 Special occupational health needs

#### Word list

**disabled** – людина з інвалідністю

**sustained** – стійкий



**Task 1. Read the text and name the categories of workers with special occupational health needs.**

Some workers have special occupational health needs. These may arise for a variety of reasons, including age, physiological condition, social conditions and barriers to communication. The special needs of such workers should be met on an individual basis with due concern to protecting their health at work, making sure that there is no possibility of discrimination.

One category of workers with special occupational health needs comprises pregnant women and working mothers. The assessment of risks at work, and the preventive and control strategies prescribed to control risks, should take account of these special needs, and arrangements should be made to avoid harm. Where hazards and risks to reproductive health have been identified, employers should take appropriate measures. This is especially important during health-risk periods such as pregnancy and breast-feeding.

These measures might include training and special technical and organizational measures, in particular the right to appropriate alternative work, without any loss of earnings.

Disabled workers are another group with special needs. In order to give effect to occupational health policy, the competent authority should provide appropriate measures for these workers. Similarly, measures should also be taken to promote programmes or systems for the rehabilitation of workers who have sustained occupational injury or illness.

**Task 2. Find the following information in the text.**

1. What are the reasons of workers' special occupational health needs?
2. What measures might be included concerning pregnant women, working mothers and disabled workers?

**Task 3. Fill in the blanks.**

1. These may arise for a variety of reasons, including \_\_\_\_\_ .
2. One category of workers with special occupational health needs comprises \_\_\_\_\_.
3. This is especially important \_\_\_\_\_ such as pregnancy and breast-feeding.
4. These measures might include \_\_\_\_\_, in particular the right to appropriate alternative work, without any loss of earnings.

**Task 4. Read the statements below and then decide if they are True (T) or False (F)**

Statement	Answer
1. Special occupational health needs may arise for a variety of reasons, including age, financial and social conditions.	
2. One category of workers with special occupational health needs comprises working mothers and pregnant women.	
3. Disabled workers are another group with special needs.	
4. The measures might include training and special technical and organizational measures, in particular the right to appropriate alternative work, without any loss of earnings.	

## Task 5. Choose the correct verb form in each of the following.

1. Although occupational health services essentially **are focusing / focus** on prevention, they may also engage in other health activities.
2. Employers **have / are having** various obligations with regard to providing a safe and healthy workplace.
3. Work **receives / is receiving** considerable attention due to its social and economic importance.
4. Studies **have shown / have been showing** that work plays a crucial and unparalleled psychological role in developing self-esteem and a sense of work.
5. If the environment within the workplace **is / will be** healthy and secure, then the worker **will be able / is able** to perform better and his or her productivity levels will be very high.
6. The World Health Organisation **has included / is including** elements of occupational health in its policy.

## 4.2 Preventive and protective measures

### Word list

**incidence** – частота

**victim** – постраждалий

**to threaten** – загрожувати

**dependant** – утриманці

**elimination** – усунення

**conducive** – сприятливий

**to substitute** – замінити

**exposure** – виявлення



**Task 1. Read the text and answer the following questions:**

- What do occupational accidents and diseases result in?
- What are duties of employers when workers are exposed to occupational hazards?

The incidence of accidents and work-related diseases and injuries in most occupational sectors is still regrettably high; there is therefore an urgent need for preventive and protective measures to be instituted at workplaces in order to guarantee the safety and health of workers. Occupational accidents and diseases not only cause great pain, suffering and death to victims, but also threaten the lives of other workers and their dependants.

*Occupational accidents and diseases also result in:*

- loss of skilled and unskilled but experienced labour;
- material loss, i.e. damage to machinery and equipment well as spoiled products;
- high operational costs through medical care, payment of compensation, and repairing or replacing damaged machinery and equipment.

Occupational health problems arise largely from hazardous factors in the working environment. Since most hazardous conditions at work are in principle preventable, efforts should be concentrated on primary prevention at the workplace, as this offers the most cost-effective strategy for their elimination and control. The planning and design of workplaces should be aimed at establishing working environments that are conducive to physical, psychological and social well-being. This means taking all reasonable precautions to avoid occupational diseases and injuries.

Workplace safety and health programmes should aim at eliminating the unsafe or unhealthy working conditions and dangerous acts which account for nearly all occupational accidents and diseases. This can be achieved in a number of ways: engineering control, design of safe work systems to minimize risks, substituting safer

materials for hazardous substances, administrative or organizational methods, and use of personal protective equipment.

### **Duties of employers when workers are exposed to occupational hazards**

*In situations where workers are exposed to occupational hazards, employers have the duty to:*

- inform the workers of all the known hazards associated with their work, the health risks involved and the relevant preventive and protective measures;
- take appropriate measures to eliminate or minimize the risks resulting from exposure to those hazards;
- provide workers with suitable protective equipment, clothing and other facilities;
- provide first aid for workers who have suffered from an injury or illness at the workplace, as well as appropriate transportation from the workplace and access to appropriate medical facilities.

### **Task 2. Match the words with their definitions.**

<b>1. incidence</b>	a) someone who has suffered as a result of someone else's actions or beliefs
<b>2. victim</b>	b) substance, ordinarily a liquid, in which other materials dissolve to form a solution
<b>3. disabled</b>	c) a confidence and satisfaction in oneself
<b>4. solvent</b>	d) the rate at which something, especially a disease, happens
<b>5. layout</b>	e) something that has been accomplished

<b>6. selfesteem</b>	f) has a physical or mental impairment that substantially limits one or more major life activity.
<b>7. achievement</b>	g) the plan or design or arrangement of something laid out

**Task 3. Fill in the blanks.**

- Occupational accidents and diseases not only \_\_\_\_\_, but also threaten the lives of other workers and their dependants.
- This means \_\_\_\_\_ to avoid occupational diseases and injuries.
- \_\_\_\_\_ in loss of skilled and unskilled but experienced labour.
- Workplace safety and health programmes should \_\_\_\_\_ working conditions and dangerous acts.

**Task 4. Join the first half of the sentence in Column A to the correct ending in Column B**

<b>Column A</b>	<b>Column B</b>
1. The incidence of accidents and work-related diseases and injuries	F. at establishing working environments that are conducive to physical, psychological and social well-being.
2. Occupational accidents and diseases also result in	G. substituting safer materials for hazardous substances, administrative or organizational methods, and use of personal protective equipment.
3. The planning and design of workplaces should be aimed	H. in most occupational sectors is still regrettably high.
4. This can be achieved in a	I. take appropriate measures to

number of ways: engineering control, design of safe work systems to minimize risks,	eliminate or minimize the risks resulting from exposure to those hazards.
5. Employers have the duty to	J. material loss.

Навчальне видання

**Методичні вказівки**  
з англійської мови «Пошук та обробка інформації»

для студентів  
1 курсу спеціальності 263 Охорона праці

**English learner guide**  
«Information searching and processing»

for 1st year students  
Specialty 263 Occupational Safety

Укладачі:  
КОРЖАВІНА Олена Євгеніївна  
ЛАЗАРЄВА Ольга Ярославна  
ЧЕРНИШЕНКО Ольга Олександрівна

Роботу до друку рекомендувала доц. Лариса ШЕЇНА

В авторській редакції

План 2024 р., поз. 1033

Підписано до друку 2024 р.  
Формат . Папір офсетний. Гарнітура Times New Roman.  
Друк ксерографічний. Ум. друк. арк. 1,5.  
Наклад 50 прим

---

Видавничий центр НТУ «ХП».  
Свідоцтво про державну реєстрацію ДК № 5478 від 21.08.2017 р.  
61002, Харків, вул. Кирпичова, 2  
Електронне видання

---